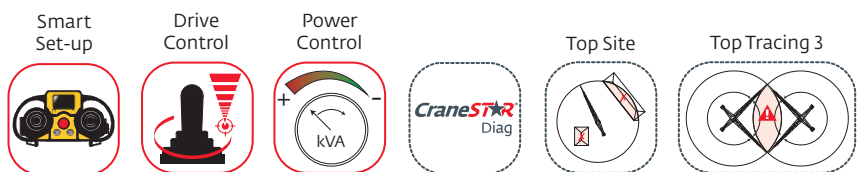
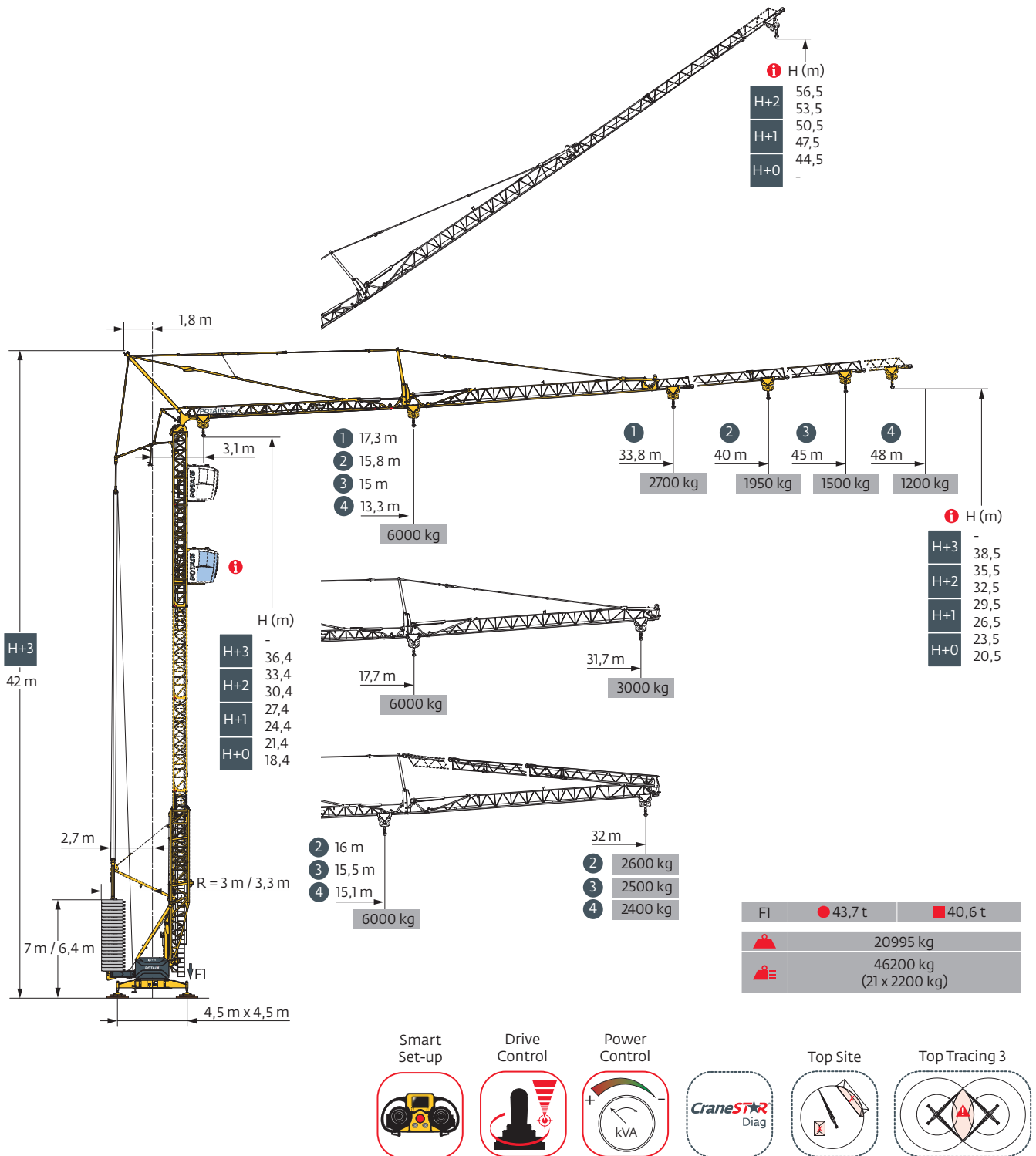
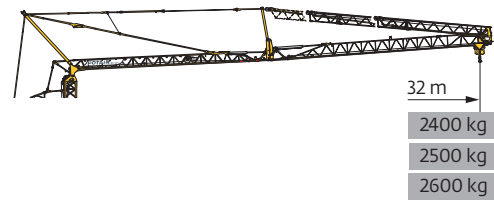
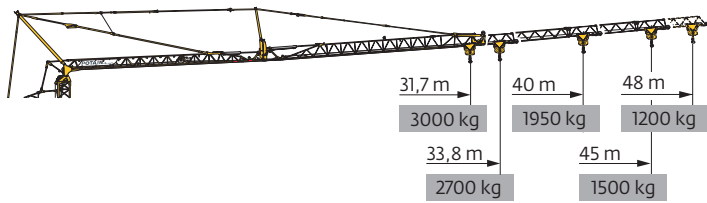


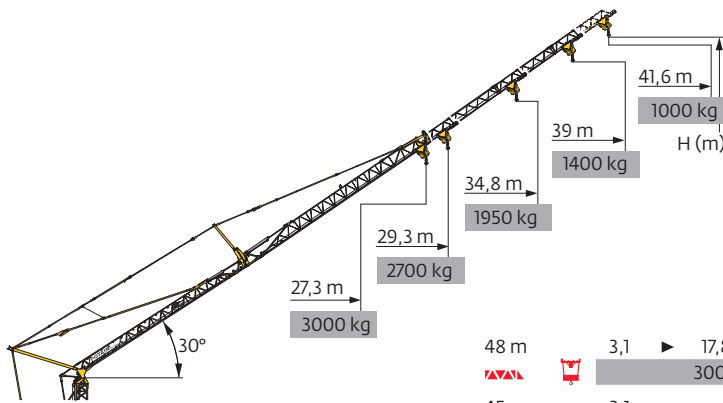
## Igo T 99



Courbes de charges / Lastkurven / Load curves / Curvas de cargas / Curve di carico  
Curvas de carga / Кривые нагрузок

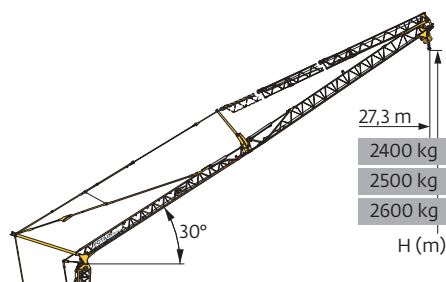


48 m	3,1	▶	13,3	14	16	18	20	22	24	26	28	30	32	34	36	38	40	42	44	46	48	m
▲▲▲	▲▲▲		6000	5600	4800	4100	3600	3200	2900	2650	2400	2200	2050	1900	1750	1650	1550	1450	1350	1250	1200	kg
45 m	3,1	▶	15	16	18	20	22	24	26	28	30	32	34	36	38	40	42	44	45			m
▲▲▲	▲▲▲		6000	5500	4800	4200	3700	3300	3000	2750	2500	2300	2150	2000	1850	1750	1650	1550	1500			kg
40 m	3,1	▶	15,8	16	18	20	22	24	26	28	30	32	34	36	38	40						m
▲▲▲	▲▲▲		6000	5900	5100	4500	4000	3600	3300	3000	2800	2550	2400	2200	2100	1950						kg
33,8 m	3,1	▶	17,3	18	20	22	24	26	28	30	32	33,8										m
▲▲▲	▲▲▲		6000	5700	5100	4500	4100	3700	3400	3100	2900	2700										kg
31,7 m	3,1	▶	17,7	18	20	22	24	26	28	30	31,7											m
▲▲▲	▲▲▲		6000	5900	5200	4600	4200	3800	3500	3200	3000											kg
48 m	3,1	▶	15,1	16	18	20	22	24	26	28	30	32										m
▲▲▲	▲▲▲		6000	5600	4800	4200	3800	3400	3100	2850	2600	2400										kg
45 m	3,1	▶	15,5	16	18	20	22	24	26	28	30	32										m
▲▲▲	▲▲▲		6000	5800	5000	4400	3900	3500	3200	2950	2700	2500										kg
40 m	3,1	▶	16	18	20	22	24	26	28	30	32											m
▲▲▲	▲▲▲		6000	5200	4600	4100	3700	3300	3100	2800	2600											kg



	48 m	45 m	40 m	33,8 m	31,7 m	
H (m)	H+2	56,5	55	52,5	-	-
		53,5	52	49,5	-	-
	H+1	50,5	49	46,5	43,4	42,2
		47,5	46	43,5	40,4	39,2
	H+0	44,5	43	40,5	37,4	36,2
		-	-	-	-	-





48 m	3,1	▶	17,8	20	22	24	26	28	30	32	34	36	38	40	41,6	m
▲▲▲	▲▲▲		3000	2600	2300	2050	1850	1700	1550	1450	1300	1200	1150	1050	1000	kg
45 m	3,1	▶	21,2	22	24	26	28	30	32	34	36	38	39			m
▲▲▲	▲▲▲		3000	2850	2600	2350	2150	1950	1800	1650	1550	1450	1400			kg
40 m	3,1	▶	24,5	26	28	30	32	34,8								m
▲▲▲	▲▲▲		3000	2800	2550	2350	2150	1950								kg
33,8 m	3,1	▶	27	28	29,3											m
▲▲▲	▲▲▲		3000	2850	2700											kg
31,7 m	3,1	▶	27,3													m
▲▲▲	▲▲▲		3000													kg








48 m	3,1	▶	22,7	24	26	27,3	m
▲▲▲	▲▲▲		3000	2800	2550	2400	kg
45 m	3,1	▶	23,5	24	26	27,3	m
▲▲▲	▲▲▲		3000	2900	2650	2500	kg
40 m	3,1	▶	24,3	26	27,3	m	
▲▲▲	▲▲▲		3000	2750	2600	kg	

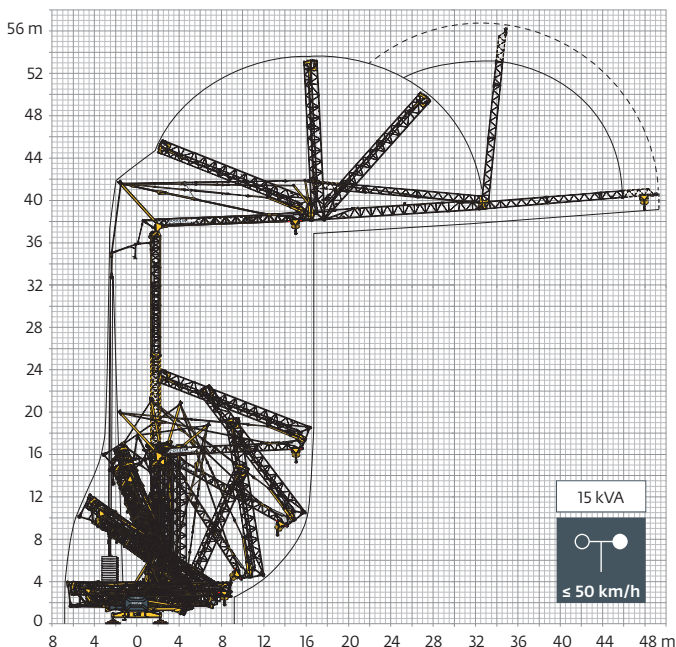
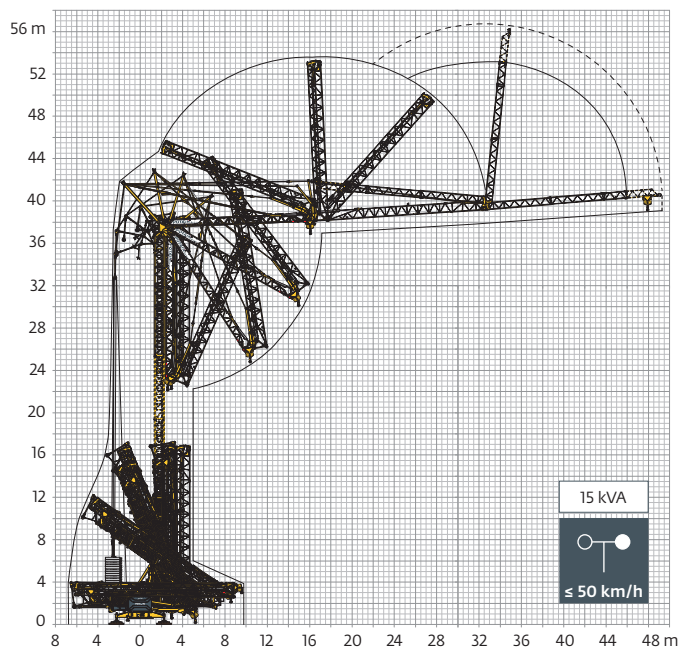
	48 m	45 m	40 m
H (m)	H+1	42,2	
		39,2	
	H+0	36,2	
		-	

Mécanismes / Triebwerke / Mechanisms / Mecanismos / Meccanismi  
 Mecanismos / Механизмы

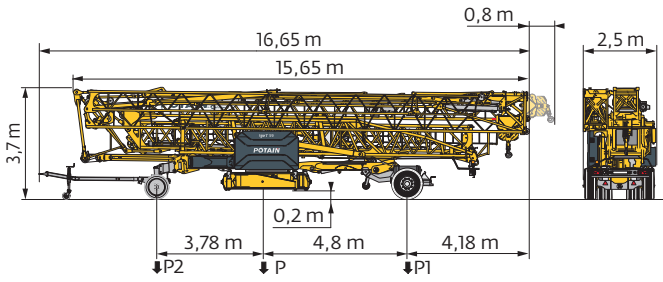
400 V - 50 Hz 480 V - 60 Hz								ch - PS hp	kW
	25 HPL™ 15	m/min	2,1	16	30	46	54	25	19
		kg	6000	6000	3000	1500	1200		
	5 DVF 5 Optima	m/min	14,7	39	55	70		5,5	4
		kg	6000	6000	2000	200			
	HPS 152	tr/min U/min rpm	0 → 0,8					2 x 5,5	2 x 4

 IEC 60204-32	 kVA	
400 V (+10% -10%) 50 Hz / 480 V (+6% -10%) 60 Hz	 29 → 21 kVA  34 → 24 kVA	

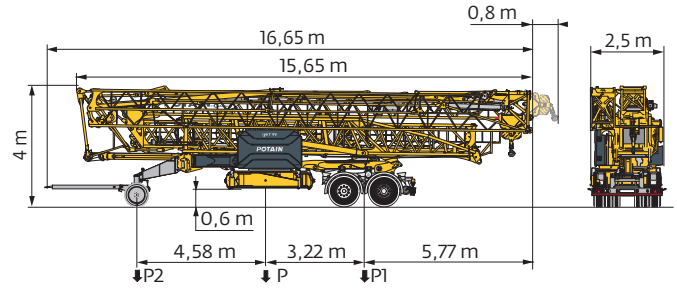
Montage / Montage / Erection / Montaje / Montaggio  
 Montagem / Монтаж



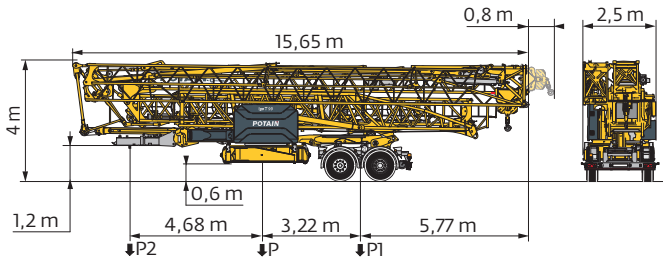
Transport / Transport / Transport / Transporte / Trasporto  
Transporte / Транспортировка



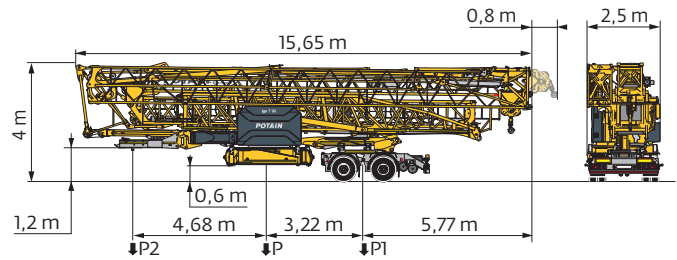
	km/h	P (kg)	P1 (kg)	P2 (kg)
DJ126M/S125	25	22985	12000	10985



	km/h	P (kg)	P1 (kg)	P2 (kg)
DJ126M/S215M	25	24625	16825	7800



	km/h	P (kg)	P1 (kg)	P2 (kg)
SL121/S215M	25	24025	16910	7115



	km/h	P (kg)	P1 (kg)	P2 (kg)
SL122/J215M (EBS)	80	23945	16810	7135

→ J215M: RCE e2\*2007/46\*0493\*02 - WVTA e2\*2007/46\*0493\*02

**FR**

- Rayon de giration
- Nous consulter
- Réactions en service
- Réactions hors service
- Poids à vide, sans lest, sans trains de transport, avec flèche maxi. et hauteur standard.
- Poids total du lest
- Équipements standards
- Équipements optionnels
- Levage
- Distribution
- Orientation
- Puissance requise
- Fonction Power Control : vitesses treuils adaptées à la puissance disponible

**DE**

- Schwenk radius
- Auf Anfrage
- Reaktionskräfte in Betrieb
- Reaktionskräfte außer Betrieb
- Gewicht ohne Last, ohne Ballast, ohne Transportachsen mit max. Auslager und Standardhöhe
- Ballast-Gesamtgewicht
- Standardausrüstungen
- Sonderausrüstungen
- Heben
- Katzfahren
- Schwenken
- Erforderliche Leistung
- Funktion Power Control: Geschwindigkeiten der Triebwerke werden an die verfügbare Leistung angepasst

**EN**

- Rear slewing radius
- Consult us
- Reactions in service
- Reactions out of service
- Weight without load, without ballast, without transport axes, with max. jib and standard height
- Total ballast weight
- Standard equipment
- Options
- Hoisting
- Trolleying
- Slewing
- Required power
- Power Control Function: winch speeds adapted to the available power

**ES**

- Radio de giro
- Consultarnos
- Reacciones en servicio
- Reacciones fuera de servicio
- Peso en vacío, sin lastre, sin trenes de transporte con flecha y altura estándar
- Peso total del lastre
- Equipamiento de serie
- Equipamiento opcional
- Elección
- Distribución
- Orientación
- Potencia Necesaria
- Función Power Control: marchas de los cabrestantes adaptadas a la potencia disponible

**IT**

- Raggio di rotazione
- Consultateci
- Reazioni in servizio
- Reazioni fuori servizio
- Peso a vuoto, senza zavorra, senza assali di trasporto, con braccio max e altezza standard.
- Peso totale della zavorra
- Equipaggiamento standard
- Equipaggiamento in opzione
- Sollevamento
- Distribuzione
- Rotazione
- Potenza richiesta
- Funzione Power Control: velocità degli organi adattate alla potenza disponibile

**PT**

- Raio de rotação
- Consultar-nos
- Reações em serviço
- Reações fora de serviço
- Peso em vazio, sem lastro, sem eixos de transporte com lança máxima e altura standard.
- Peso total do lastro
- Equipamento de série
- Equipamento opcional
- Elevação
- Distribuição
- Rotação
- Potência Necessária
- Função Power Control: velocidades de guincho adaptadas à potência disponível

**RU**

- Задний габарит
- Проконсультируйтесь у нас
- Реакция при работе
- Реакция в покое
- Вес без груза, без балласта, без осей для транспортировки, с максимальным вылетом стрелы и стандартной высотой
- Общий вес балласта
- Стандартное оборудование
- Дополнительное оборудование (опция)
- Подъем
- Перемещение по стреле
- Поворот
- Потребляемая мощность
- Функция контроля мощности Power Control: регулировка скорости лебедок в зависимости от доступной мощности



Hauteurs sous crochet données moufle plaquée

Hakenhöhen werden mit plattiertem Haken angegeben

Hook heights given with plated pulley block

Altura bajo gancho con pasteca bloqueada

Altezza sotto gancio con bozzello in contatto con carrello

Altura ao gancho com o cadernal em contacto com o carrinho

высота под крюком дана при условии, что крюковая подвеска соприкасается с кареткой

Document commercial non contractuel

Unverbindliches Vertriebsdokument

This commercial document is not legally binding

Documento comercial no contractual

Documento commerciale non vincolante

Documento comercial não contratual

Этот коммерческий документ не является юридически обязательным

Pour toute information technique se référer à la notice correspondante

Für technische Informationen, siehe die entsprechenden Anweisungen

For any technical information, please refer to the corresponding instructions

Para cualquier información técnica, ver la noticia correspondiente

Per tutte le informazioni tecniche fare riferimento al catalogo istruzioni

Para qualquer informação técnica complementar consultar as respectivas instruções

Для получения технической информации, см. соответствующие инструкции